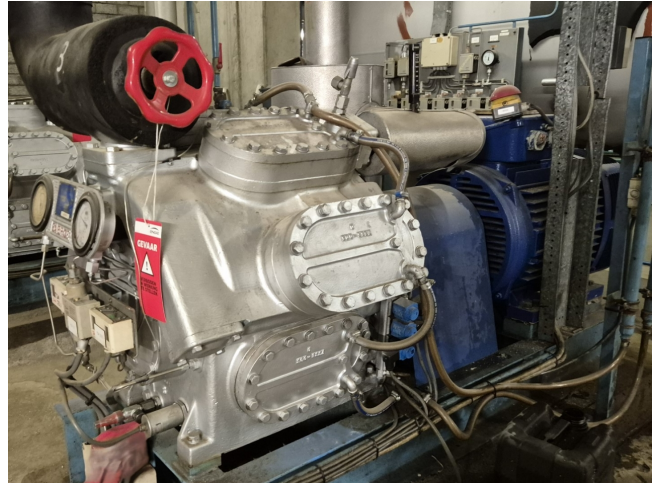


# Sabroe SMC 108L

## Specifications

Marka	Sabroe
Typ	SMC 108L
Czynnik chłodzący	NH 3 (ammonia)
kW at +10°C/+40°C	724,8
kW at 0°C/+40°C	479,4
kW at -5°C/+40°C	381,5
kW at -10°C/+40°C	298,1
Rozładunek	✓
Kontrolka wydajności	✓
Podstawa na stalowej ramie	✓
Ciśnieniowe przełączniki bezpieczeństwa	✓
Wskaźniki ciśnienia	✓
Separator oleju	✓
Okno widokowe	✓
Zawór elektromagnetyczny	✓
Uwagi	Y.o.b. 1986
Uwagi	*Capacity based on R717 (Ammonia).
Rozmiary	2200x1000x1700 mm (LxWxH)
Stock	1



## Description

### Used Sabroe SMC 108L

Used Sabroe SMC 108L reciprocating compressor on NH3 (Ammonia). Complete with a Leroy Somer P 280 S-4 electric motor - 50 Hz - 110 kW - 1460 RPM, oil separator with a volume of 65 liters, pressure and safety switches/gauges and a sight glass. \*Why choose for HOSBV? We are not only the largest used refrigeration specialist in Europe, but also, we deliver all equipment including an extensive test, warranty and an industrial cleaning. \*Optionally we can also perform a new paint job and arrange the logistics.

